



Simply Better . . . *by Design*

NEW

BUFFER TANK

for **ROBOTIC MILKING**



- ✓ Easy to install
- ✓ Future proof allowing for further expansion
- ✓ PLC displaying the current status and fault
- ✓ Smart Layout for easy accessibility, maintenance, and troubleshooting

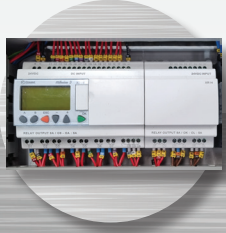
ROBOTIC MILKING SIMPLIFIED

Putting YOU in Control

Liscarroll Engineering used industry leading technicians in Robotic Milking to implement mechanical and functional improvements over existing products available to create this **NEW** and **IMPROVED** Buffer Tank.

BUFFER TANK - The advantages

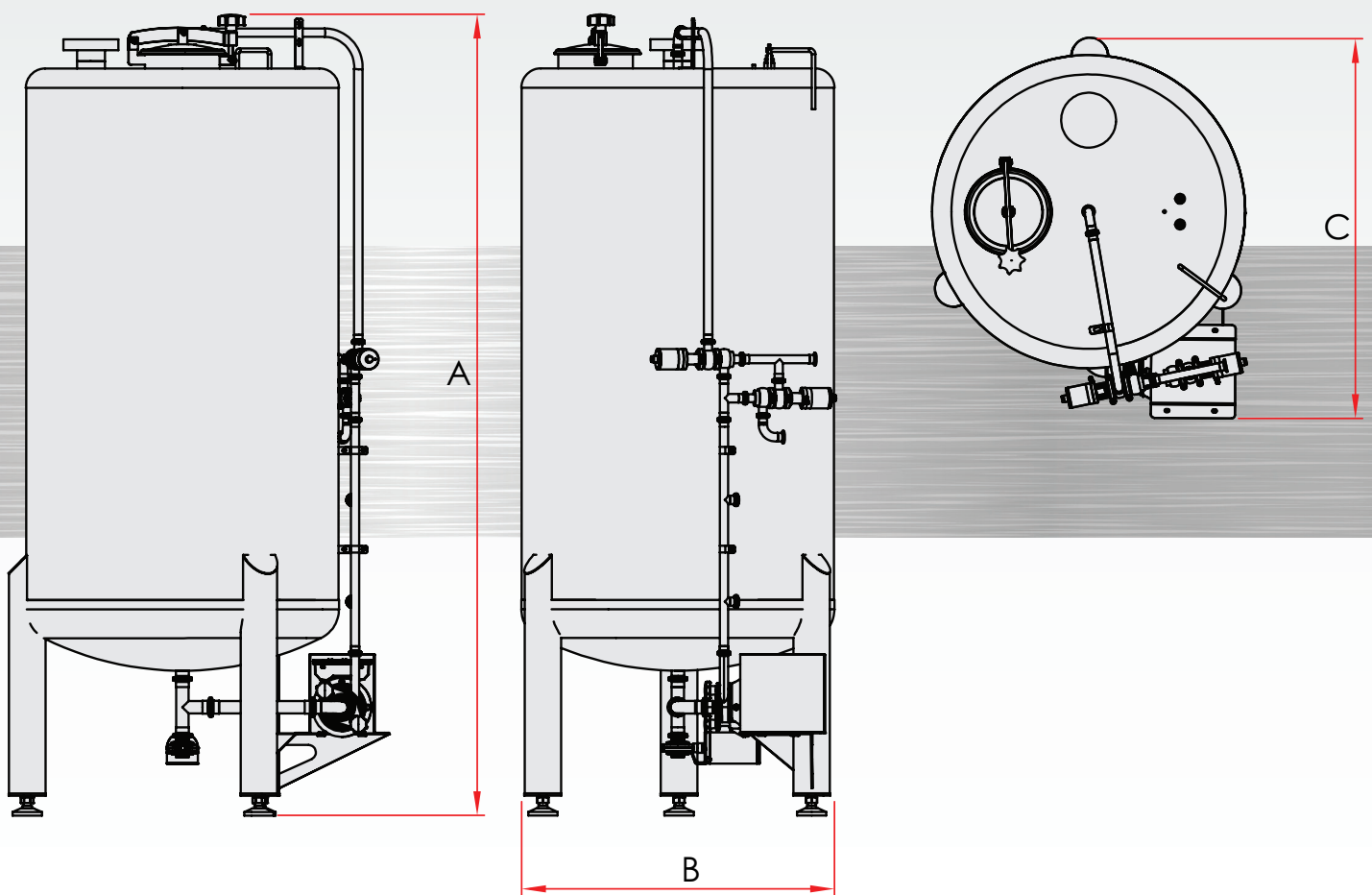
400 Litre Model Shown



- ▶ Diverter valve manifold pipe on the Buffer Tank is supplied for qty 3 delivery lines on all tanks as standard.
- ▶ Reliable industry leading milk pump.
- ▶ Compressed air regulator and Pressure Sensor included as standard to eliminate milk being dumped accidentally.
- ▶ 3 supply line programme installed as standard with all tanks in the PLC.
- ▶ Pneumatic valve manifold block (in control panel) supplied as standard for up to 3 delivery lines.
- ▶ 3 dosing pumps included as standard.

BUFFER TANK - The measurements

MILK TANK SPECIFICATIONS			
Tank size (ltrs)	A	B	C
400	1490mm	856mm	1038mm
800	2190mm	856mm	1038mm
1200	2295mm	956mm	1122mm

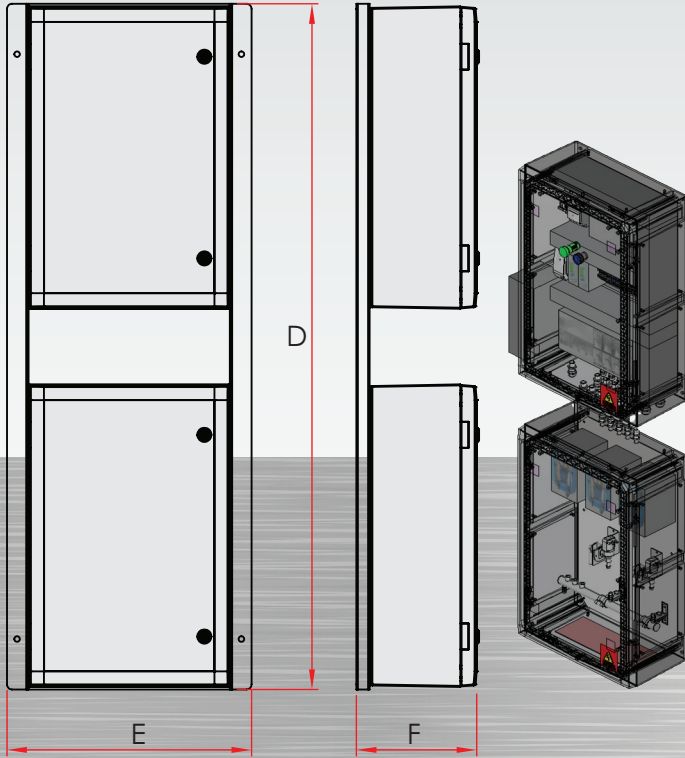


- ▶ Improved and Adjustable liquid level controllers to accommodate different water characteristics with an updated probe design to reduce the likelihood of probes shorting out.
- ▶ Pump overload monitoring to raise alarm if the milk pump is in fault and the fault is displayed.
- ▶ Alarms can easily be linked into existing Autodialer if required.
- ▶ Alarms displayed on PLC screen and status sent to Robot.

BUFFER TANK - The control panel

CONTROL PANEL SPECIFICATIONS

Tank size (ltrs)	D	E	F
400 / 800 / 1200	1360mm	485mm	240mm



- ▶ Separate electronic and wet compartments on one wall mounting stainless steel backing plate.
- ▶ Electrics and pneumatics in top panel.
- ▶ Dosing pumps, water solenoids and CIP manifold in bottom panel.
- ▶ All devices contained within panel enclosures.

Liscarroll Engineering Limited

Liscarroll, Mallow, Co. Cork, Ireland, P51 WVR9

Tel: +353 (0)22 48200

info@liscarrollengineering.ie

www.liscarrollengineering.ie

